



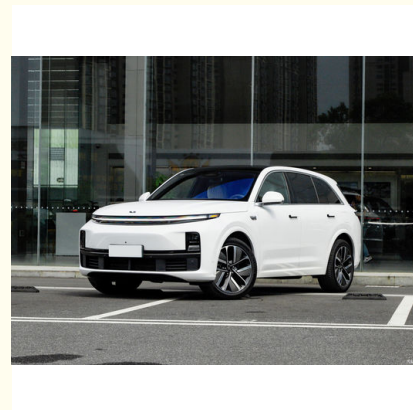
L7 2023 Ideal Electric Car Air Extended Range White Pearl Paint Mid Large SUV

Our Product Introduction

for more products please visit us on petrolhybridcars.com

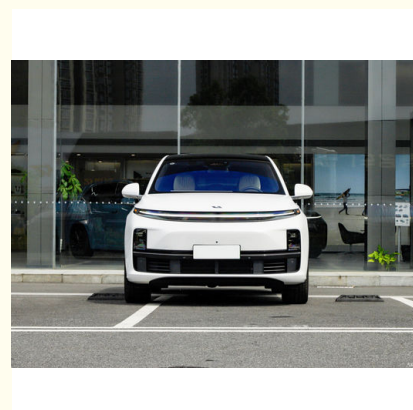
Basic Information

- Place of Origin: CHINA
- Brand Name: Ideal
- Model Number: L7
- Minimum Order Quantity: 1



Product Specification

- Product Name: EV Electric Car
- Color: White
- Body Structure: 5-door 6-seat SUV
- Energy Type: Pure Electric/100% Electric Car
- Max Speed: 180km/h
- Length * Width * Height: 5050*1995*1750
- Fast Charge Time: 0.5 Hour
- Slow Charging Time: 6.5 Hour
- Total Weight: 2450kg
- Number Of Cylinders: 4
- Highlight: L7 Ideal Electric Car, L7 Mid Large SUV, White Pearl Paint Mid Large SUV



More Images



Product Description

Ideal L7 2023 Air Extended Range White Pearl Paint Medium Large Suv

Place of Origin	China
Product name	ideal L7
Body structure	5-door 6-seat SUV
Energy type	Pure Electric/100% Electric Car
Battery type	Ternary Lithium Battery T
Max Speed	180km/h
Wheelbase	3105mm
Length * width * height	5050*1995*1750
Steering	LHD
Fast charge time	0.5Hour
Slow charging time	6.5 Hour
Total weight	2450kg
Number of cylinders	4



Shaanxi Xianghelixin Automobile Sales Service Co., Ltd.



18702965875



xunqin419@gmail.com



petrolhybridcars.com

Room 2307, Shanxi Securities Building, No.2 Gaoxin Road, Lianhu District, Xi 'an City, Shaanxi Province