



200 Km/h Top Speed BEV Battery Electric Vehicle With Leather Seats GPS Connectivity And Aerodynamic Design

Our Product Introduction

for more products please visit us on petrolhybridcars.com

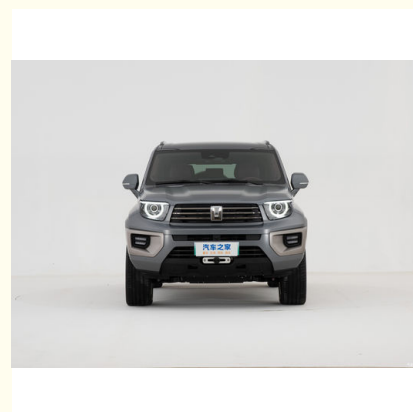
Basic Information

- Place of Origin: China
- Brand Name: Tank
- Model Number: 700
- Minimum Order Quantity: 1
- Payment Terms: T/T

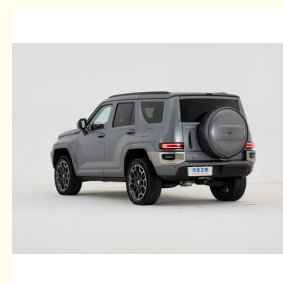


Product Specification

- Charging Port: Type 2
- Connectivity: Bluetooth, Wi-Fi, GPS
- Interior Design: Leather Seats
- Motor Type: Permanent Magnet Synchronous Motor
- Interior Features: GPS, Bluetooth, Touchscreen
- Top Speed: 200 Km/h
- Infotainment System: Android/iOS Compatible
- Exterior Design: Aerodynamic Design
- Highlight: **Leather Seats BEV Battery Electric Vehicle ,
GPS BEV Battery Electric Vehicle ,
Aerodynamic BEV Battery Electric Vehicle**



More Images



Product Description

Product Description:

One of the standout features of the BEV Battery Electric Vehicle is its high charging capacity. With the ability to charge quickly and efficiently, you can spend more time on the road and less time waiting for your car to charge. This is thanks to the cutting-edge BESS Battery Energy Storage System, which provides a reliable and consistent source of power for your vehicle.

But the BEV Battery Electric Vehicle is more than just an eco-friendly car - it's also packed with features that make driving more enjoyable and convenient. The interior is outfitted with GPS, Bluetooth, and a touchscreen display, giving you easy access to all your favorite apps and entertainment. And the luxurious leather seats provide comfort and style that rivals any other car on the market.

Connectivity is also a top priority for the BEV Battery Electric Vehicle. With Bluetooth and Wi-Fi capabilities, you can stay connected to your phone and other devices no matter where you go. And with built-in GPS, you'll always know exactly where you're headed - whether it's a new city or just a new route home.

And let's not forget about performance - the BEV Battery Electric Vehicle can reach top speeds of up to 200 km/h, making it a great choice for drivers who love a little excitement on the road. With its sleek design and powerful electric motor, you'll turn heads wherever you go.

In summary, the BEV Battery Electric Vehicle is the perfect choice for anyone who wants a high-performing, eco-friendly car that doesn't sacrifice luxury or convenience. With its cutting-edge BESS Battery Energy Storage System, advanced features like GPS and Bluetooth, and top-of-the-line interior design, you'll be driving in style while doing your part for the environment.

Features:

Product Name: BEV Battery Electric Vehicle
Drive Mode: Rear Wheel Drive
Charging Capacity: High
Top Speed: 200 Km/h
Suspension Type: Independent Suspension
Exterior Design: Aerodynamic Design
Power Source: Electric Vehicle Lithium Ion Battery

Technical Parameters:

Technical Parameters	Description
Suspension Type	Independent Suspension
Interior Comfort	High
Connectivity	Bluetooth, Wi-Fi, GPS
Charging Port	Type 2
Drive Mode	Rear Wheel Drive
Exterior Design	Aerodynamic Design
Motor Type	Permanent Magnet Synchronous Motor
Infotainment System	Android/iOS Compatible
Charging Capacity	High
Tire Size	235/45 R19

This BEV Battery Electric Vehicle is powered by a BESS Battery Energy Storage System, which uses an Electric Car Lithium Ion Battery.

Applications:

The Tank 700 is perfect for a variety of different application occasions and scenarios. Its Rear Wheel Drive and Independent Suspension make it ideal for both city driving and off-road adventures. With a Top Speed of 200 Km/h, this electric car is perfect for those who love speed and power. The 235/45 R19 Tire Size provides excellent grip and stability on any surface, ensuring a smooth and comfortable ride. The Tank 700 is also packed with a variety of advanced features that make it a joy to drive. Its GPS system ensures that you never get lost, while the Bluetooth connectivity allows you to stay connected to your mobile device at all times. The Touchscreen display provides easy access to all of the car's features and functions, making it easy to control and customize to your liking.

Whether you're looking for a reliable and efficient car for daily commuting or a high-performance vehicle for long distance travel, the Tank 700 BEV Battery Electric Vehicle is the perfect choice. With a Minimum Order Quantity of just one, it's easy to get your hands on this amazing electric car. Payment Terms are T/T, making it easy to purchase and own. So why wait? Get your Tank 700 today and experience the future of electric car technology!



18702965875



xunqin419@gmail.com



petrolhybridcars.com

Room 2307, Shanxi Securities Building, No.2 Gaoxin Road, Lianhu District, Xi 'an City, Shaanxi Province