



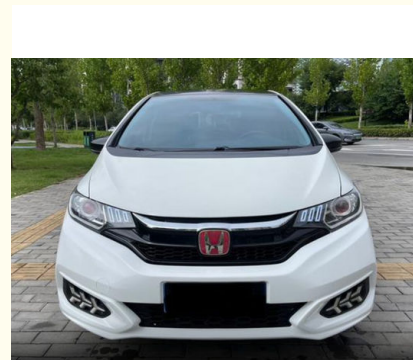
Used Small Gasoline Sedan Vehicle 1.5L CVT Max Pro 188km/h Speed 5 Doors Hatchback Oil Petrol Car for Honda Fit

Our Product Introduction

for more products please visit us on petrolhybridcars.com

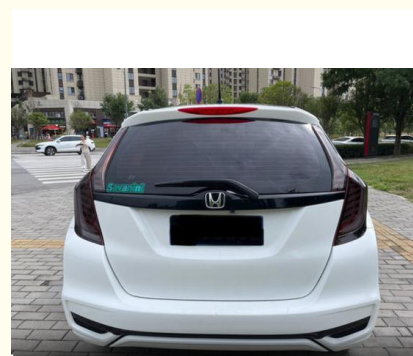
Basic Information

- Place of Origin: Japan
- Brand Name: Honda
- Model Number: Fit
- Minimum Order Quantity: discussible
- Delivery Time: 5-8 word days
- Payment Terms: T/T

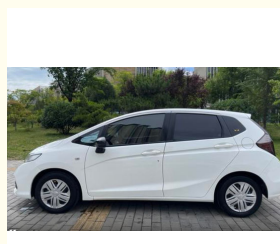


Product Specification

- Energy Type: Gas
- Maximum Power: 131HP
- Length * Width * Height: 4096x1695x1525
- Product Category: Honda Pertrol Car
- Body Structure: 5 Door 5 Seat SUV
- Drive Model: Front Wheel Drive
- Highlight: 1.5L CVT Small Gasoline Sedan Vehicle, 5 Doors Small Gasoline Sedan Vehicle, Used Small Gasoline Sedan Vehicle



More Images



Product Description:

2018 Honda Fit Comfortable

The 2018 Honda Fit is a classic that stands out in the field of small cars. Its exterior is stylish and dynamic, with sharp headlights and a unique air intake grille, showing a strong personality charm. The smooth body lines not only give it a smart posture, but also effectively reduce wind resistance.

The interior space design is unique. Although the body size is relatively compact, with Honda's excellent "MM concept" (maximizing passenger space and minimizing mechanical space), the riding space is spacious and comfortable. Whether in the front or back row, passengers can enjoy ample head and leg space. The interior layout is reasonable, the operation is convenient, and the materials and craftsmanship reflect Honda's pursuit of high quality.

In terms of power, the 2018 Honda Fit is equipped with a high-efficiency engine with a stable and powerful power output. Whether it is shuttling in urban roads or speeding on highways, it can be done with ease. At the same time, the excellent fuel economy greatly reduces your travel costs, truly achieving a perfect balance between power and energy saving.

In terms of configuration, it is equipped with a series of practical and advanced functions, such as multi-function steering wheel, intelligent central control screen, reversing radar, electric sunroof, etc., which add convenience and fun to your driving. In terms of safety performance, it has a solid body structure and a series of active and passive safety configurations, such as airbags, brake assist system, body stability control system, etc., to fully protect the travel safety of you and your passengers.

In terms of handling performance, the Fit is flexible and precise, with light steering and comfortable suspension adjustment, and can easily cope with various complex road conditions. Whether it is a narrow street or a crowded parking lot, it can be easily controlled, showing its advantages of being small and flexible.

In short, the 2018 Honda Fit has become the ideal small car choice in the minds of many consumers with its stylish appearance, spacious space, excellent power, rich configuration and excellent handling, bringing convenience and pleasure to your life.

Features:

- Product Name: Used Honda Fit 2018
- Safety:
 - Comprehensive safety airbag system for passenger protection
 - Advanced safety technologies including ABS (Anti-lock Braking System), Electronic Stability Control, etc., for stable driving and braking performance
 - Reverse camera and parking assistance system for convenient parking operations

Technical Parameters:

Maximum Speed :	188
Length * Width * Height :	4096x1695x1525
Engine	L4
Energy Type:	GAS
Body Structure:	5 Door 5 Seat SUV
NEDC Electric Range :	
Maximum Torque:	155

Power train:	Gas
Exterior Design:	The interior design is exquisite and practical, using high-quality materials and comfortable to the touch. The seats are ergonomic and provide excellent support and ride comfort. The interior is richly equipped with features such as a large center screen and an intelligent connectivity system to make your drive more convenient and enjoyable.
Product Name:	Used 2018 Honda Fit





Applications:

The stylish and dynamic appearance and smooth lines outline a charming figure, making you the focus of the street.

The interior space is spacious and comfortable, flexible and changeable to meet your diverse needs.

Efficient power, economical and fuel-efficient, saving costs for your travel.

Rich and practical configurations, enjoy a convenient driving experience.

Excellent safety performance, escorting every trip for you.

Support and Services:

- 24/7 technical support hotline for any questions or concerns
- On-site technical support for major issues
- Regular software updates to improve performance and add new features
- Access to Toyota's network of certified service centers for maintenance and repairs
- Warranty coverage for the vehicle and battery

Our technical support and services team is dedicated to providing prompt and effective solutions to any issues that customers may encounter. We strive to make sure that our customers have a worry-free ownership experience with their Car.

Packing and Shipping:

Product Packaging:

Fit Car

Warranty Information

User Manual

Shipping Information:

Product will be shipped within 5-7 business days of order confirmation.

Shipping fees will be calculated during checkout.

Shipping available to most locations worldwide.

Tracking information will be provided once the product has been shipped.

FAQ:

Q: What is the brand name of the car?

A: The brand name is Honda Fit.

Q: What is the model number of the car?

A: The model number is 2018 Honda fit.

Q: Where is the full electric car manufactured?

A: The car is manufactured in China.

Q: What is the minimum order quantity for the full electric car?

A: The minimum order quantity is discussible. Please contact us for more information.

Q: What are the payment terms for the full electric car?

A: The payment terms are T/T.

Q: What is the delivery time for the full electric car?

A: The delivery time is 5-8 word days.



Shaanxi Xianghelixin Automobile Sales Service Co., Ltd.



18702965875



xunqin419@gmail.com



petrolhybridcars.com

Room 2307, Shanxi Securities Building, No.2 Gaoxin Road, Lianhu District, Xi 'an City, Shaanxi Province