



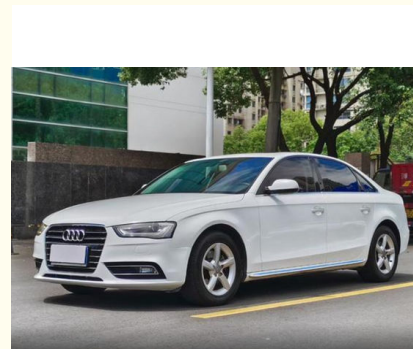
2015 Audi Of A4L Sedan Gas Petrol 2.0T 180PS L4 132kW/320Nm R19 Luxury Dynamic Model LHD Used Car

Our Product Introduction

for more products please visit us on petrolhybridcars.com

Basic Information

- Place of Origin: German
- Brand Name: Audi
- Model Number: A4
- Minimum Order Quantity: discussible
- Delivery Time: 5-8 word days
- Payment Terms: T/T

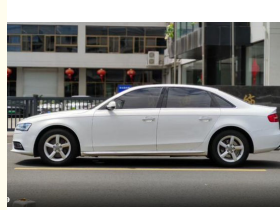
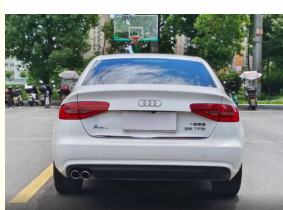
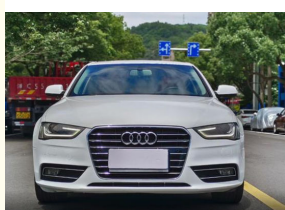


Product Specification

- Energy Type: Sedan
- Maximum Power: 180HP
- Length * Width * Height: 4761x1826x1439
- Product Category: Gas Car
- Body Structure: 5 Door 5 Seat SUV
- Drive Model: Front Wheel Drive
- Highlight: **180PS Audi A4L Sedan Used Car, 2015 Audi A4L Sedan, 2.0T Audi A4L Sedan**



More Images



Product Description:

Used 2015 Audi A4

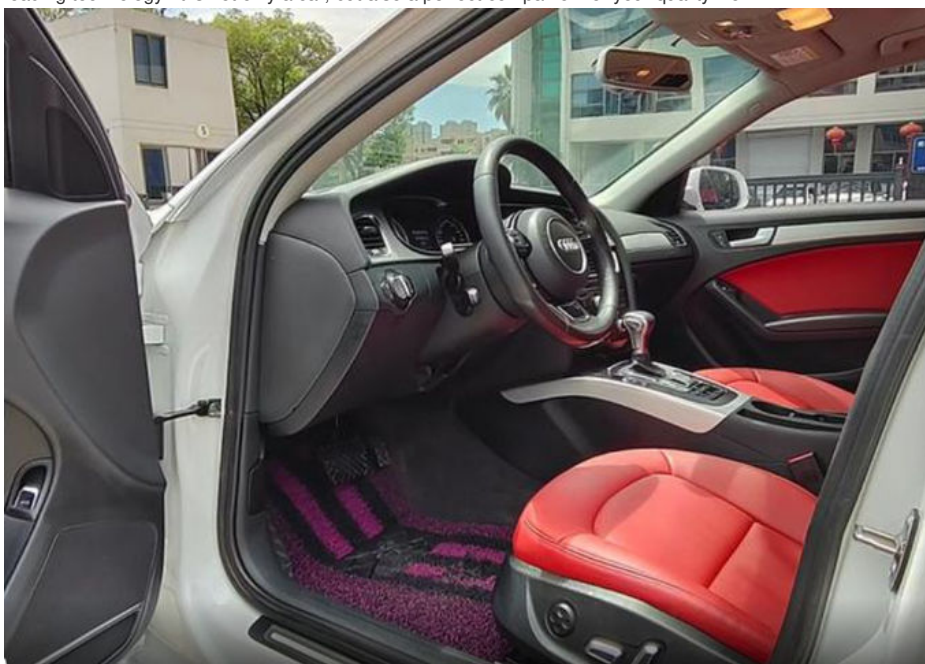
The 2015 Audi A4L is a classic with eternal charm.

In terms of exterior design, it continues the elegance and grandeur of the Audi family. The smooth body lines outline an elegant and dynamic outline, and the sharp headlights and unique air intake grille complement each other, highlighting the dignity and extraordinary. In the car, high-quality interior materials create a luxurious and comfortable atmosphere. Exquisite stitching, soft leather seats and well-designed center console all reflect Audi's ultimate pursuit of details. The spacious interior space brings you and your passengers a comfortable driving experience.

In terms of power, the 2015 Audi A4L is equipped with a powerful and efficient engine with abundant and stable power output. Whether it is a city road or a highway, it can easily cope with it, allowing you to enjoy the fun of driving.

In terms of technological configuration, it also performs well. The intelligent driving assistance system and advanced multimedia entertainment system make your driving more convenient and enjoyable.

The 2015 Audi A4L has become a model in the mid-to-high-end sedan segment with its superior quality, outstanding performance and leading technology. It is not only a car, but also a perfect companion for your quality life.





Features:

Product Name: Used 2015 Audi A4L

Safety:

Comprehensive safety airbag system for passenger protection

Advanced safety technologies including ABS (Anti-lock Braking System), Electronic Stability Control, etc., for stable driving and braking performance

Reverse camera and parking assistance system for convenient parking operations

Technical Parameters:

Maximum Speed :	180
Length * Width * Height :	4761x1826x1439

Engine	L4
Energy Type:	GAS
Body Structure:	5 Door 5 Seat SUV
NEDC Electric Range:	
Maximum Torque:	320
Powertrain:	Gas
Exterior Design:	The interior design is exquisite and practical, using high-quality materials and comfortable to the touch. The seats are ergonomic and provide excellent support and ride comfort. The interior is richly equipped with features such as a large center screen and an intelligent connectivity system to make your drive more convenient and enjoyable.
Product Name:	Audi A4L

Applications:

The stylish and dynamic appearance and smooth lines outline a charming figure, making you the focus of the street.

The interior space is spacious and comfortable, flexible and changeable to meet your diverse needs.

Efficient power, economical and fuel-efficient, saving costs for your travel.

Rich and practical configurations, enjoy a convenient driving experience.

Excellent safety performance, escorting every trip for you.

Support and Services:

- 24/7 technical support hotline for any questions or concerns
- On-site technical support for major issues
- Regular software updates to improve performance and add new features
- Access to Toyota's network of certified service centers for maintenance and repairs
- Warranty coverage for the vehicle and battery

Our technical support and services team is dedicated to providing prompt and effective solutions to any issues that customers may encounter. We strive to make sure that our customers have a worry-free ownership experience with their Car.

Packing and Shipping:

Product Packaging:

Audi A4L

Warranty Information

User Manual

Shipping Information:

Product will be shipped within 5-7 business days of order confirmation.

Shipping fees will be calculated during checkout.

Shipping available to most locations worldwide.

Tracking information will be provided once the product has been shipped.

FAQ:

Q: What is the brand name of the car?

A: The brand name is Audi A4L.

Q: Where is the full electric car manufactured?

A: The car is manufactured in China.

Q: What is the minimum order quantity for the full electric car?

A: The minimum order quantity is discussible. Please contact us for more information.

Q: What are the payment terms for the full electric car?

A: The payment terms are T/T.

Q: What is the delivery time for the full electric car?

A: The delivery time is 5-8 word days.



Shaanxi Xianghelixin Automobile Sales Service Co., Ltd.



18702965875



xunqin419@gmail.com



petrolhybridcars.com

Room 2307, Shanxi Securities Building, No.2 Gaoxin Road, Lianhu District, Xi 'an City, Shaanxi Province