



## 2021 Audi Of A4L Sedan Gas Petrol 2.0T 190PS L4 132kW/320Nm R19 Luxury Dynamic Model LHD Used Car For Sale

Our Product Introduction

for more products please visit us on petrolhybridcars.com

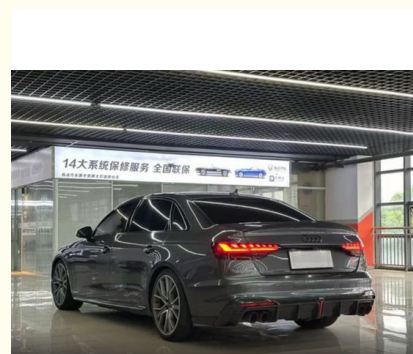
### Basic Information

- Place of Origin: German
- Brand Name: Audi
- Model Number: A4
- Minimum Order Quantity: discussible
- Delivery Time: 5-8 word days
- Payment Terms: T/T

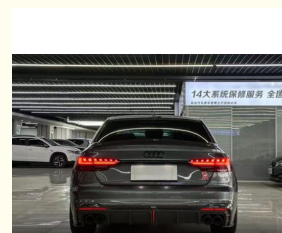
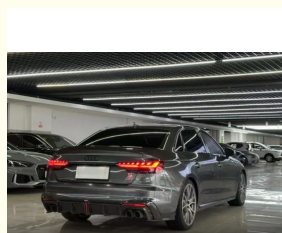
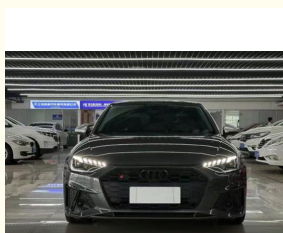


### Product Specification

- Energy Type: Sedan
- Maximum Power: 190HP
- Length \* Width \* Height: 4858x1847x1439
- Product Category: Gas Car
- Body Structure: 5 Door 5 Seat SUV
- Drive Model: Four Wheel Drive
- Highlight: 190PS Audi A4L Sedan, 2.0T Audi A4L Sedan, 2021 Audi A4L Sedan



### More Images



## Product Description

### Product Description:

Used 2021 Audi A4

The 2021 Audi A4L is a luxury car that combines elegance and dynamic passion.

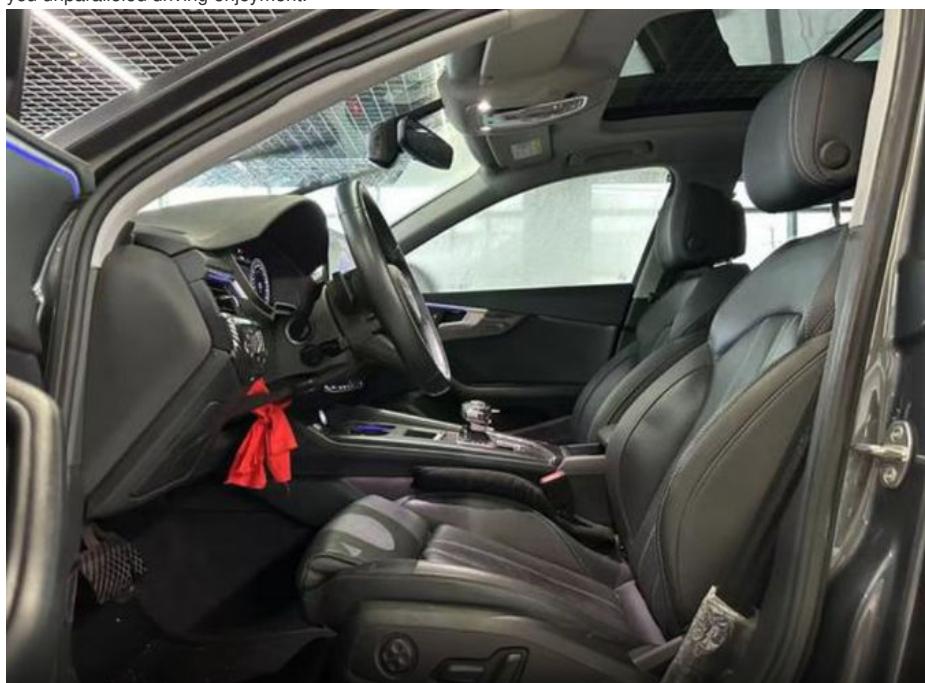
In terms of appearance, it continues the classic design language of the Audi family. The sharp headlights and hexagonal air intake grille complement each other, showing a strong aura. The body lines are smooth and full of tension, outlining an elegant and dynamic outline. The design of the rear of the car is simple and atmospheric, and the unique taillight shape is highly recognizable when lit at night.

Entering the car, high-quality interior materials and exquisite craftsmanship create a luxurious and comfortable atmosphere. The embracing cockpit design allows the driver to enjoy the convenience of control. The large-size full LCD instrument panel and floating central control screen are not only full of technology, but also provide rich information and convenient operation experience. The exquisite button layout and comfortable seats add comfort to every trip.

In terms of power, the 2021 Audi A4L is equipped with an efficient and powerful engine, with advanced transmission, smooth output and abundant power. Whether it is shuttling in urban roads or speeding on highways, it can easily cope with it and bring a smooth driving experience.

In terms of configuration, it is equipped with a series of intelligent driving assistance systems, such as adaptive cruise, automatic parking, lane keeping assistance, etc., to escort your driving. At the same time, it also has an excellent sound system and intelligent interconnection functions, making your travel full of fun and convenience.

The 2021 Audi A4L is not only a car, but also a symbol of quality life. It perfectly combines luxury, technology and performance to bring you unparalleled driving enjoyment.





**Features:**

Product Name: Used 2021 Audi A4L

Safety:

Comprehensive safety airbag system for passenger protection

Advanced safety technologies including ABS (Anti-lock Braking System), Electronic Stability Control, etc., for stable driving and braking performance

Reverse camera and parking assistance system for convenient parking operations

**Technical Parameters:**

Maximum Speed :	190
Length * Width * Height :	4858x1847x1439
Engine	L4
Energy Type:	GAS
Body Structure:	5 Door 5 Seat SUV
NEDC Electric Range :	
Maximum Torque:	320

Power train:	Gas
Exterior or Design:	The interior design is exquisite and practical, using high-quality materials and comfortable to the touch. The seats are ergonomic and provide excellent support and ride comfort. The interior is richly equipped with features such as a large center screen and an intelligent connectivity system to make your drive more convenient and enjoyable.
Product Name:	Audi A4L

### Applications:

The stylish and dynamic appearance and smooth lines outline a charming figure, making you the focus of the street. The interior space is spacious and comfortable, flexible and changeable to meet your diverse needs. Efficient power, economical and fuel-efficient, saving costs for your travel. Rich and practical configurations, enjoy a convenient driving experience. Excellent safety performance, escorting every trip for you.

### Support and Services:

- 24/7 technical support hotline for any questions or concerns
- On-site technical support for major issues
- Regular software updates to improve performance and add new features
- Access to Toyota's network of certified service centers for maintenance and repairs
- Warranty coverage for the vehicle and battery

Our technical support and services team is dedicated to providing prompt and effective solutions to any issues that customers may encounter. We strive to make sure that our customers have a worry-free ownership experience with their Car.

### Packing and Shipping:

Product Packaging:

Audi A4L

Warranty Information

User Manual

Shipping Information:

Product will be shipped within 5-7 business days of order confirmation.

Shipping fees will be calculated during checkout.

Shipping available to most locations worldwide.

Tracking information will be provided once the product has been shipped.

### FAQ:

**Q: What is the brand name of the car?**

A: The brand name is Audi A4L.

**Q: Where is the full electric car manufactured?**

A: The car is manufactured in China.

**Q: What is the minimum order quantity for the full electric car?**

A: The minimum order quantity is discussible. Please contact us for more information.

**Q: What are the payment terms for the full electric car?**

A: The payment terms are T/T.

**Q: What is the delivery time for the full electric car?**

A: The delivery time is 5-8 word days.



**Shaanxi Xianghelixin Automobile Sales Service Co., Ltd.**



18702965875



xunqin419@gmail.com



petrolhybridcars.com

Room 2307, Shanxi Securities Building, No.2 Gaoxin Road, Lianhu District, Xi 'an City, Shaanxi Province