



Used Benz Glc 260 Gas Car SUV With 211HP Maximum Power

Our Product Introduction

for more products please visit us on petrolhybridcars.com

Basic Information

- Place of Origin: China
- Brand Name: Benz
- Model Number: Glc
- Minimum Order Quantity: discussible
- Delivery Time: 5-8 word days
- Payment Terms: T/T

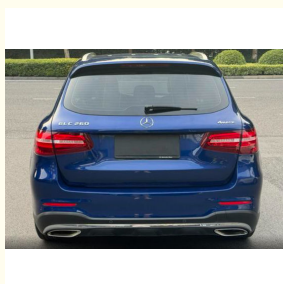
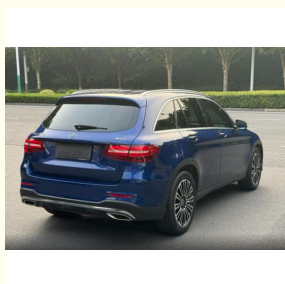


Product Specification

- Energy Type: SUV
- Maximum Power: 211HP
- Length * Width * Height: 4661x1898x1664
- Product Category: Gas Car
- Body Structure: 5 Door 5 Seat SUV
- Drive Model: Four Wheel Drive
- Highlight: **Used Benz Glc 260, 211HP Benz Glc 260, Fast Deliver Benz Glc 260**



More Images



Product Description

Product Description:

Used Benz Glc 260

The 2018 Mercedes-Benz GLC260 is a luxury SUV that makes people yearn for it.

In terms of appearance, it continues the elegant design of the Mercedes-Benz family, with smooth lines and a sense of power. The body proportions are coordinated, grand and agile. The star grille on the front face complements the iconic three-pointed star logo, highlighting the distinguished brand identity. The sharp headlights, like bright eyes, illuminate the road ahead and add a sense of sharpness to the whole vehicle.

The interior is a perfect combination of luxury and comfort. The use of high-quality materials, from delicate leather seats to exquisite wood grain panels, every detail shows Mercedes-Benz's persistent pursuit of quality. The spacious interior space provides a comfortable riding experience for drivers and passengers. The intelligent center console has a reasonable layout and convenient operation, allowing you to easily control various functions during driving.

In terms of power, the 2018 Mercedes-Benz GLC260 performs well. The powerful engine output is stable and powerful, and it can easily cope with both shuttling on urban roads and galloping on highways. With an advanced suspension system, it effectively filters road bumps and brings you a smooth and comfortable driving experience.

In terms of safety, the Mercedes-Benz GLC260 is equipped with a series of advanced safety configurations, such as active brake assist, blind spot monitoring, etc., to escort your travel.

The 2018 Mercedes-Benz GLC260 is not only a car, but also a symbol of a lifestyle. It integrates luxury, comfort, power and safety, and takes you to experience a different driving journey.





Features:

- Product Name: Used Benz Glc
- Safety:
 - Comprehensive safety airbag system for passenger protection
 - Advanced safety technologies including ABS (Anti-lock Braking System), Electronic Stability Control, etc., for stable driving and braking performance
 - Reverse camera and parking assistance system for convenient parking operations

Technical Parameters:

Maximum Speed :	222
Length * Width * Height :	4661x1898x1664
Engine	L4

Energy Type:	Gas
Body Structure:	5 Door 5 Seat SUV
Maximum Torque:	350
Powertrain:	Gas
Exterior Design:	The interior design is exquisite and practical, using high-quality materials and comfortable to the touch. The seats are ergonomic and provide excellent support and ride comfort. The interior is richly equipped with features such as a large center screen and an intelligent connectivity system to make your drive more convenient and enjoyable.
Product Name:	Glc 260

Applications:

The stylish and dynamic appearance and smooth lines outline a charming figure, making you the focus of the street.

The interior space is spacious and comfortable, flexible and changeable to meet your diverse needs.

Efficient power, economical and fuel-efficient, saving costs for your travel.

Rich and practical configurations, enjoy a convenient driving experience.

Excellent safety performance, escorting every trip for you.

Support and Services:

- 24/7 technical support hotline for any questions or concerns
- On-site technical support for major issues
- Regular software updates to improve performance and add new features
- Access to Toyota's network of certified service centers for maintenance and repairs
- Warranty coverage for the vehicle and battery

Our technical support and services team is dedicated to providing prompt and effective solutions to any issues that customers may encounter. We strive to make sure that our customers have a worry-free ownership experience with their Car.

Packing and Shipping:

Product Packaging:

Used Glc 260

Warranty Information

User Manual

Shipping Information:

Product will be shipped within 5-7 business days of order confirmation.

Shipping fees will be calculated during checkout.

Shipping available to most locations worldwide.

Tracking information will be provided once the product has been shipped.

FAQ:

Q: What is the brand name of the car?

A: The brand name is Glc 260.

Q: Where is the full electric car manufactured?

A: The car is manufactured in China.

Q: What is the minimum order quantity for the full electric car?

A: The minimum order quantity is discussible. Please contact us for more information.

Q: What are the payment terms for the full electric car?

A: The payment terms are T/T.

Q: What is the delivery time for the full electric car?

A: The delivery time is 5-8 word days.



Shaanxi Xianghelixin Automobile Sales Service Co., Ltd.



18702965875



xunqin419@gmail.com



petrolhybridcars.com

Room 2307, Shanxi Securities Building, No.2 Gaoxin Road, Lianhu District, Xi 'an City, Shaanxi Province