



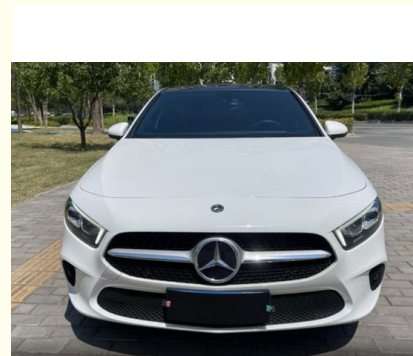
## 2021 Benz Of A200 Sedan Gas Petrol 1.3T 163PS L4 120kW Luxury Dynamic Model LHD Used Benz A200 Car

Our Product Introduction

for more products please visit us on petrolhybridcars.com

### Basic Information

- Place of Origin: German
- Brand Name: Benz
- Model Number: A200
- Minimum Order Quantity: discussible
- Delivery Time: 5-8 word days
- Payment Terms: T/T

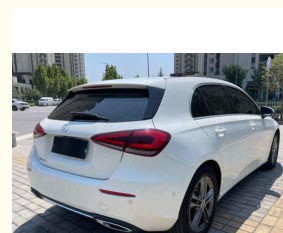
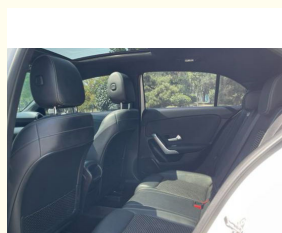
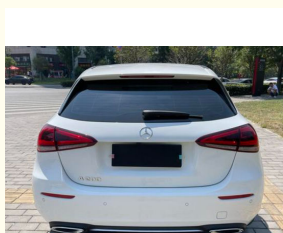
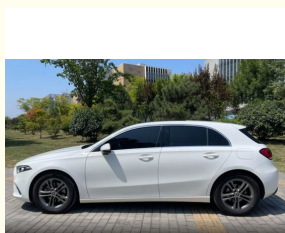


### Product Specification

- Energy Type: Sedan
- Maximum Power: 163HP
- Length \* Width \* Height: 4419x1796x1432
- Product Category: Gas Car
- Body Structure: 5 Door 5 Seat SUV
- Drive Model: Front Wheel Drive
- Highlight: **1.3T 163PS Benz A200 Sedan, 120kW Luxury 2021 Benz A200 Sedan, Used Benz A200 Sedan**



### More Images



## Product Description

### Product Description:

Used 2021 Benz A200

The 2021 Mercedes-Benz A200 sedan is a perfect blend of luxury and refinement.

In terms of appearance, it continues the elegant design language of the Mercedes-Benz family, and the smooth body lines outline a stylish and dynamic profile. The iconic star grille on the front face shines brightly, and with the sharp headlights, it shows a strong visual impact. On the side of the body, the simple and powerful lines, matched with exquisite wheels, show a unique temperament. The rear part of the car has a full shape and the taillight design is ingenious, which is particularly eye-catching when lit at night.

In terms of interior, the 2021 Mercedes-Benz A200 sedan is full of luxury. The use of high-quality materials creates a comfortable driving environment. The suspended dual 10.25-inch high-definition display is full of technology, bringing you rich information display and convenient operation experience. Exquisite air-conditioning vents, multi-function steering wheel and comfortable seats, every detail reflects the exquisite craftsmanship of Mercedes-Benz.

In terms of power, it is equipped with an efficient engine with smooth and strong power output, which can meet your various driving needs on urban roads and highways. At the same time, the advanced suspension system and precise steering allow you to experience excellent handling performance during driving.

In terms of safety configuration, the 2021 Mercedes-Benz A200 sedan is equipped with a series of advanced safety systems, such as active brake assist, lane departure warning, etc., to escort your travel.

Whether it is daily commuting or long-distance travel, the 2021 Mercedes-Benz A200 sedan can be your ideal choice with its excellent quality, stylish appearance, luxurious interior and excellent performance.





**Features:**

- Product Name: Used 2020 Benz A200
- Safety:
  - Comprehensive safety airbag system for passenger protection
  - Advanced safety technologies including ABS (Anti-lock Braking System), Electronic Stability Control, etc., for stable driving and braking performance
  - Reverse camera and parking assistance system for convenient parking operations

**Technical Parameters:**

Maximum Speed :	220
Length * Width * Height :	4419x1796x1432
Engine	L4
Energy Type:	GAS
Body Structure:	5 Door 5 Seat SUV
NEDC Electric Range :	
Maximum Torque:	250
Power train:	Gas

Exterior or Design:	The interior design is exquisite and practical, using high-quality materials and comfortable to the touch. The seats are ergonomic and provide excellent support and ride comfort. The interior is richly equipped with features such as a large center screen and an intelligent connectivity system to make your drive more convenient and enjoyable.
Product Name:	A200

## Applications:

The stylish and dynamic appearance and smooth lines outline a charming figure, making you the focus of the street.  
The interior space is spacious and comfortable, flexible and changeable to meet your diverse needs.  
Efficient power, economical and fuel-efficient, saving costs for your travel.  
Rich and practical configurations, enjoy a convenient driving experience.  
Excellent safety performance, escorting every trip for you.

## Support and Services:

- 24/7 technical support hotline for any questions or concerns
- On-site technical support for major issues
- Regular software updates to improve performance and add new features
- Access to Toyota's network of certified service centers for maintenance and repairs
- Warranty coverage for the vehicle and battery

Our technical support and services team is dedicated to providing prompt and effective solutions to any issues that customers may encounter. We strive to make sure that our customers have a worry-free ownership experience with their Car.

## Packing and Shipping:

Product Packaging:  
Benz A200  
Warranty Information  
User Manual  
Shipping Information:  
Product will be shipped within 5-7 business days of order confirmation.  
Shipping fees will be calculated during checkout.  
Shipping available to most locations worldwide.  
Tracking information will be provided once the product has been shipped.

## FAQ:

**Q: What is the brand name of the car?**  
A: The brand name is Benz A200  
**Q: Where is the full electric car manufactured?**  
A: The car is manufactured in China.  
**Q: What is the minimum order quantity for the full electric car?**  
A: The minimum order quantity is discussible. Please contact us for more information.  
**Q: What are the payment terms for the full electric car?**  
A: The payment terms are T/T.  
**Q: What is the delivery time for the full electric car?**  
A: The delivery time is 5-8 word days.



**Shaanxi Xianghelixin Automobile Sales Service Co., Ltd.**



18702965875



xunqin419@gmail.com



petrolhybridcars.com

Room 2307, Shanxi Securities Building, No.2 Gaoxin Road, Lianhu District, Xi 'an City, Shaanxi Province