



IM L7 2022 Pro Version Medium And Large Car Pure Electric 578 Horsepower 425 (578Ps) Dual Motors Four-wheel Drive

Our Product Introduction

for more products please visit us on petrolhybridcars.com

Basic Information

- Place of Origin: China
- Brand Name: IM L7
- Model Number: IM L7
- Minimum Order Quantity: discussible
- Delivery Time: 5-8 word days
- Payment Terms: T/T

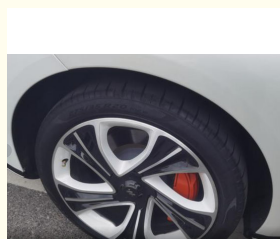


Product Specification

- Energy Type: Pure Electric
- Maximum Power: 425(578Ps)
- Length * 5098x1960x1485
4609x1798x1464Width *
Height:
- Product Category: Sedan
- Body Structure: 4 Door 5 Seat Sedan
- Drive Model: Dual Motors Four-wheel Drive
- Highlight: **Medium And Large 425 Pure electric car,
IM L7 Dual motors Pure electric car,
578 horsepower Pure electric car**



More Images



Product Description:

Used IM L7

The IM L7 is a cutting-edge electric sedan designed to offer a premium driving experience with advanced technology, exceptional performance, and modern luxury. Developed by IM Motors, a collaboration between SAIC, Alibaba, and Zhangjiang Hi-Tech, the L7 combines sleek aesthetics, innovative engineering, and environmental sustainability, making it a standout in the electric vehicle market.

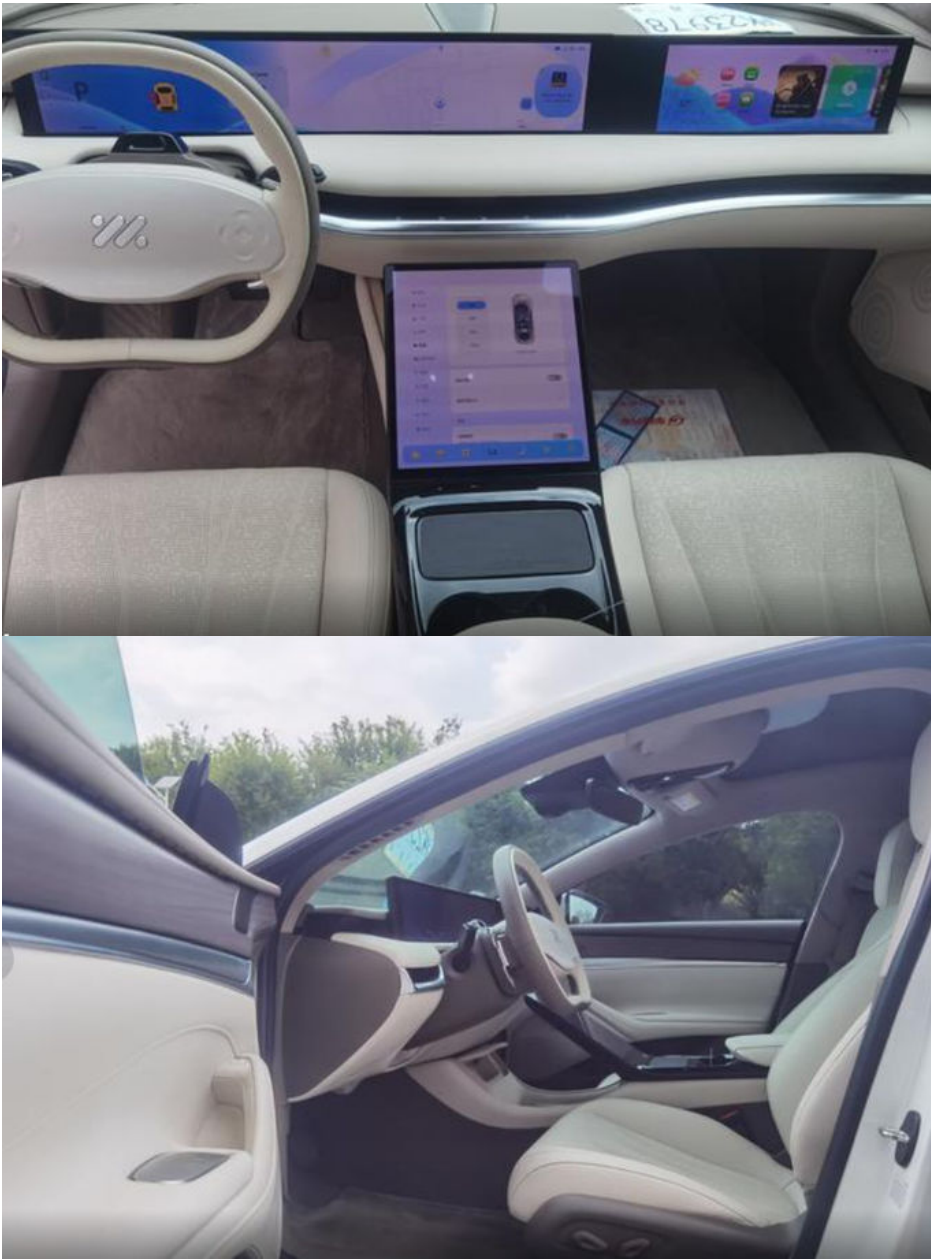
At the heart of the IM L7 is its powerful dual-motor all-wheel drive system, capable of delivering up to 578 horsepower and reaching 0-100 km/h in just 3.87 seconds, ensuring exhilarating performance. Its 93 kWh battery pack provides an impressive driving range of up to 615 km on a single charge, making it perfect for long-distance travel while keeping emissions at zero.

Inside, the L7 boasts a futuristic and luxurious cabin equipped with cutting-edge technology. The centerpiece is a massive 39-inch triple-screen setup, seamlessly integrating the infotainment system, instrument cluster, and navigation into one interface. It also features a voice control system, augmented reality (AR) heads-up display, and a Level 2+ autonomous driving system, ensuring a safe, convenient, and highly interactive driving experience.

Comfort and luxury are at the forefront of the IM L7's design, with premium materials like Nappa leather seats and a spacious, minimalist interior offering an immersive experience. Advanced features such as intelligent temperature control, adaptive air suspension, and acoustic glass ensure that every journey is as smooth and comfortable as possible.

In addition to its superior performance and comfort, the IM L7 emphasizes sustainability with its eco-friendly design and fast-charging capability, allowing for quick recharges on the go. For drivers seeking innovation, luxury, and sustainability, the IM L7 is the perfect electric vehicle, pushing the boundaries of what a premium EV can achieve.





Features:

1.Product Name: Used IM L7

- Safety:
- Comprehensive safety airbag system for passenger protection
 - Advanced safety technologies including ABS (Anti-lock Braking System), Electronic Stability Control, etc., for stable driving and braking performance
 - Reverse camera and parking assistance system for convenient parking operations

Technical Parameters:

Maximum Speed :	200
Length * Width * Height :	5098x1960x1485

Engine	
Body Structure:	4 Door 5 Seat sedan
NEDC Electric Range:	
Maximum Torque:	250
Powertrain:	Pure electric
Exterior Design:	The interior design is exquisite and practical, using high-quality materials and comfortable to the touch. The seats are ergonomic and provide excellent support and ride comfort. The interior is richly equipped with features such as a large center screen and an intelligent connectivity system to make your drive more convenient and enjoyable.
Product Name:	IM L7

Applications:

The stylish and dynamic appearance and smooth lines outline a charming figure, making you the focus of the street.
The interior space is spacious and comfortable, flexible and changeable to meet your diverse needs.
Efficient power, economical and fuel-efficient, saving costs for your travel.
Rich and practical configurations, enjoy a convenient driving experience.
Excellent safety performance, escorting every trip for you.

Support and Services:

- 24/7 technical support hotline for any questions or concerns
- On-site technical support for major issues
- Regular software updates to improve performance and add new features
- Access to Toyota's network of certified service centers for maintenance and repairs
- Warranty coverage for the vehicle and battery

Our technical support and services team is dedicated to providing prompt and effective solutions to any issues that customers may encounter. We strive to make sure that our customers have a worry-free ownership experience with their Car.

Packing and Shipping:

Product Packaging:

IM L7

Warranty Information

User Manual

Shipping Information:

Product will be shipped within 5-7 business days of order confirmation.

Shipping fees will be calculated during checkout.

Shipping available to most locations worldwide.

Tracking information will be provided once the product has been shipped.

FAQ:

Q: What is the brand name of the car?

A: The brand name is IM L7

Q: Where is the full electric car manufactured?

A: The car is manufactured in China.

Q: What is the minimum order quantity for the full electric car?

A: The minimum order quantity is discussible. Please contact us for more information.

Q: What are the payment terms for the full electric car?

A: The payment terms are T/T.

Q: What is the delivery time for the full electric car?

A: The delivery time is 5-8 word days.



Shaanxi Xianghelixin Automobile Sales Service Co., Ltd.



18702965875



xunqin419@gmail.com



petrolhybridcars.com

Room 2307, Shanxi Securities Building, No.2 Gaoxin Road, Lianhu District, Xi 'an City, Shaanxi Province